

## **Operation Instructions for Replacing CCS1 Gun Holder with NACS Gun Holder**

### **1. Prepare the necessary tools**

### **2. Replacement steps**

Step 1: Remove the CCS1 gun holder

Step 2: Install the NACS gun holder

## 1. Prepare the necessary tools

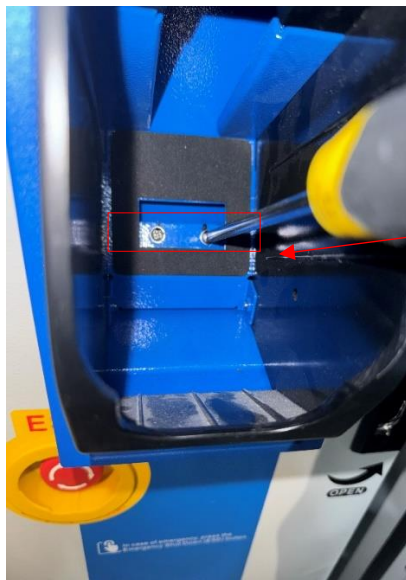
The following pictures are only for reference, subject to on-site tools.

1	Large flathead screwdriver		1
---	----------------------------	---	---

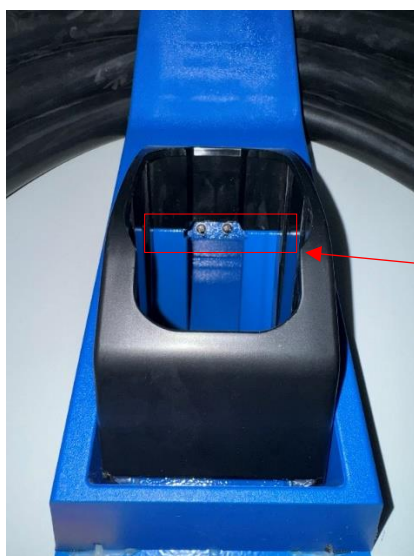
## 2. Replacement steps

### Step 1: Remove the fixing screws of the CCS1 gun holder

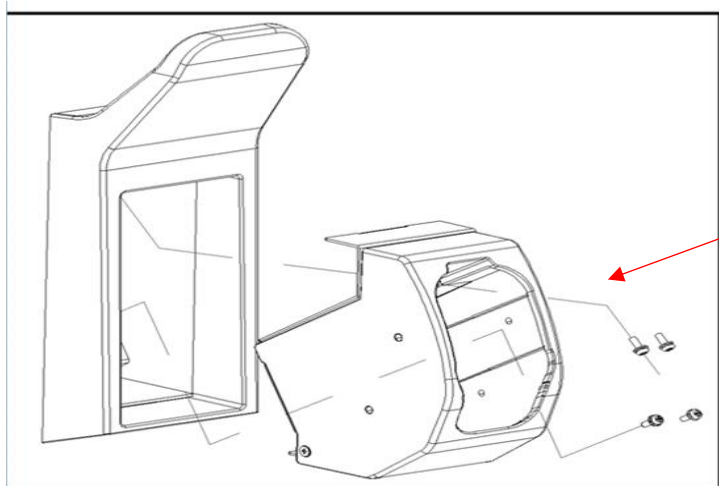
Use a large flathead screwdriver to remove the four fixing screws in front of the CCS1 gun holder (as shown in the following picture).



Remove the two fixing screws at the lower end of the CCS1 gun holder.

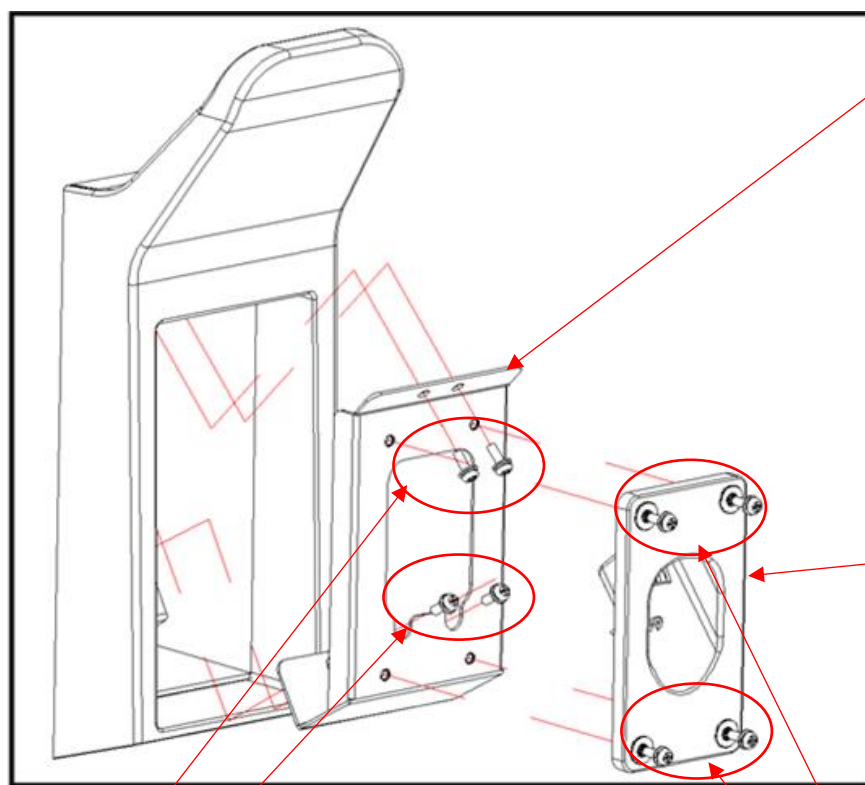


Remove the two fixing screws on the upper end of the CCS1 gun holder.



The 3D rendering is shown here.

## Step 2: Install the NACS gun holder



Install the plate

NACS empty seat

Step 2: Use a large flathead screwdriver to fix the plate to the entire machine (the previous hole position) with 4 M4X12 screws.

Step 1: Use a large flathead screwdriver to fix the NACS empty seat to the plate with 4 M4X20 screws.

The image below shows the complete installation:



Note: Follow the same steps for the other side.